

MONTHLY MEMBERSHIP PROGRESS REPORT

LOCATION ONTARIO

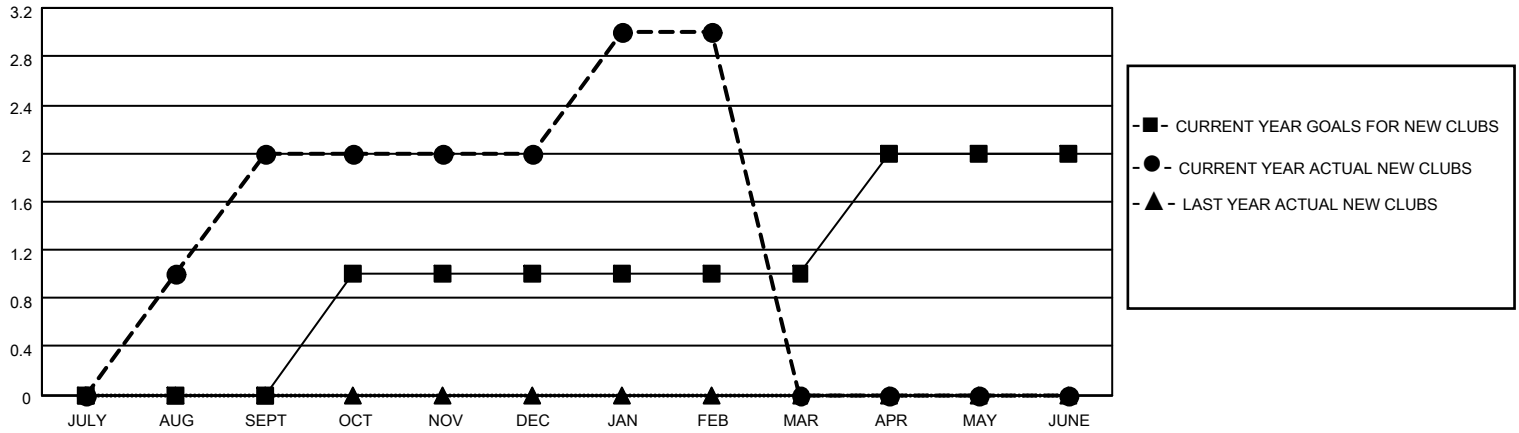
District A 16

Results as of: 2/28/2023

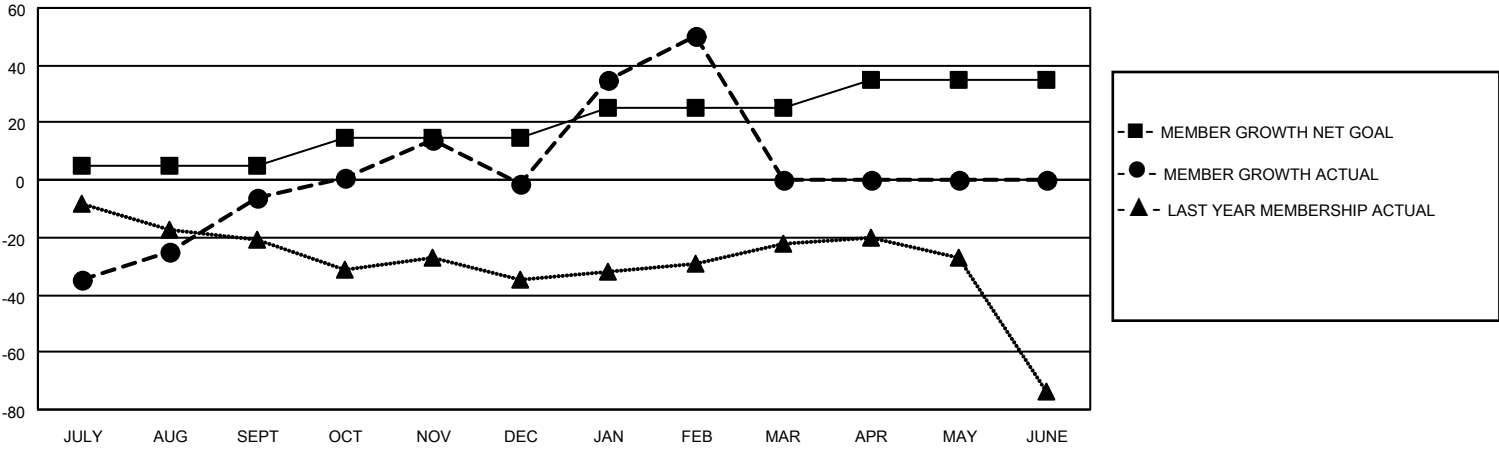
Clubs			
RESULTS FOR 2022-2023			
QUARTER	NEW CLUB GOAL	NEW CLUBS	DROPPED CLUBS
JULY/AUG/SEPT	0	2	1
OCT/NOV/DEC	1	0	2
JAN/FEB/MAR	0	1	1
APR/MAY/JUNE	1	0	0

Members			
RESULTS FOR 2022-2023			
QUARTER	MEMBER GROWTH NET GOAL	MEMBER GROWTH ACTUAL	DROPPED MEMBERS ACTUAL (including transfers)
JULY/AUG/SEPT	5	70	65
OCT/NOV/DEC	10	41	30
JAN/FEB/MAR	10	69	14
APR/MAY/JUNE	10	0	0

GOALS AND ACTUAL NEW CLUBS CUMULATIVE



GOALS AND ACTUAL MEMBERS CUMULATIVE



DROPPED CLUBS: 4

35 CLUBS OF 58 ADDED 1 OR MORE NEW MEMBERS

GENDER DISTRIBUTION

MALE	720 (63.66%)
FEMALE	411 (36.34%)
NON BINARY	0 (0.00%)
PREFER NOT TO ANSWER	0 (0.00%)

DROPPED MEMBERS

[CLICK HERE FOR CUMULATIVE MEMBERSHIP DATA](#)

DECEASED	18
CLUB CANCELLED	0
OTHER	91
TOTAL	109

TOTAL FAMILY UNIT MEMBERS 282

FAMILY MEMBERS PAYING HALF DUES 147